

A man wearing a white hard hat and an orange safety vest over a light blue shirt is looking down at a tablet computer. He is standing in an industrial environment with yellow metal railings and equipment visible in the background.

**SafetyIQ**

# 5 Questions To Ask About Your EHS Management

# Table of Content

<b>Section 01: Introduction</b>	<b>2</b>
<b>Section 02: Question:</b>	<b>3</b>
Dispersed Workforce Management	3
Introducing AI	4
Supporting Mental Health and Fatigue	5
Real-Time Visibility into High-Risk Activities	6
Preperation for Future Compliance	7
<b>Section 03: How We Can Help</b>	<b>8</b>

# Introduction

The effectiveness of an EHS system isn't measured by its mere existence, but by its ability to adapt, predict, and proactively manage risks across diverse scenarios. As artificial intelligence, real-time monitoring, and predictive analytics reshape the landscape of workplace safety, it's crucial to scrutinize whether your current EHS approach is truly fit for purpose. Are you equipped to handle the complexities of a dispersed workforce? Can your system anticipate and prevent incidents before they occur?

**Many organizations are realizing that their EHS solutions, once considered cutting-edge, may now be struggling to keep up with the pace of change.**

This eBook cuts through the noise of EHS jargon and marketing promises to ask the hard-hitting questions that matter. By examining five critical areas where many EHS systems fall short, we aim to challenge your assumptions and spark a reevaluation of your safety strategy. Whether you're a seasoned safety professional or a business leader concerned with protecting your most valuable asset – your people – these questions will guide you towards creating a more robust, responsive, and effective EHS management system.

## Contact:

USA: 1 800 208 6253

AUS: 1800 491 746

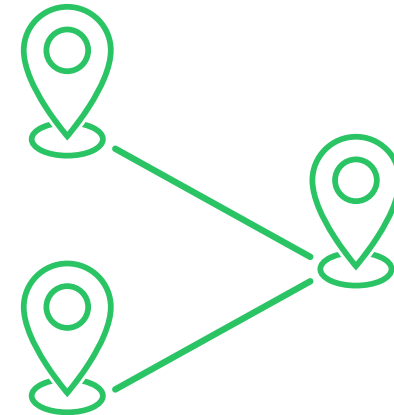
E: [media@safetyiq.com](mailto:media@safetyiq.com)

W: [safetyiq.com](http://safetyiq.com)

# 1 Can You Manage Dispersed Workforces?

With the rise of remote and mobile workforces, many companies find that their EHS systems aren't built to handle the challenges of dispersed teams. If your team is spread across multiple locations or frequently on the road, how do you ensure their safety in real-time? Traditional EHS systems often lack the adaptability needed for such environments.

An EHS system may cover general safety requirements, but specialized tools—such as lone worker monitoring or journey management software—are necessary to fill the gaps for mobile teams. These tools allow you to track employees in real-time, respond swiftly to incidents, and ensure that even those in remote locations are protected.



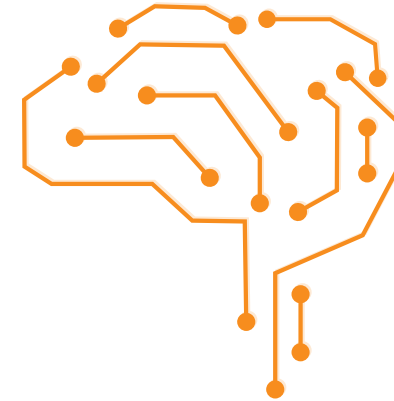
---

## More Questions to Ask:

- ✓ Are you able to monitor the safety of workers in real-time, regardless of their location?
- ✓ Do your current systems offer fatigue monitoring during and after long work shifts?
- ✓ How quickly can you respond to safety incidents involving remote workers?

## 2

# Are you Ready to Introduce AI into your EHS System?



AI is becoming a game-changer in safety management. According to a 2023 study by Safety & Health Magazine, companies using AI in their safety processes reduced incidents by up to 30%. However, integrating AI into an EHS system requires careful planning. Is your data consistently captured and organized, ready for AI-powered analysis? If not, AI could amplify gaps instead of closing them.

Before adopting AI, it's critical to ensure that your EHS system captures comprehensive, consistent safety data. AI works best when fed structured data that can be analyzed for patterns and predictive insights. Without this foundation, AI can introduce more noise than clarity, so it's essential to start by organizing and standardizing your data collection processes.

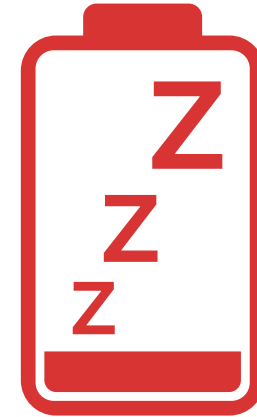
---

## More Questions to Ask:

- ✓ Do you have consistent safety data capture in a well-organized system?
- ✓ Is your team prepared to manage and interpret AI-driven insights effectively?
- ✓ How can AI assist with predictive safety management in your current setup?

## 3

# How Well is Your EHS System Supporting Mental Health and Fatigue Management?



Mental health and fatigue management are increasingly recognized as critical components of workplace safety. According to the National Safety Council, fatigue contributes to nearly 13% of workplace injuries. Despite this, many EHS systems miss the mark on mental health and fatigue monitoring. Is your training making a difference, or are employees still suffering from burnout and reduced performance?

Addressing mental health and fatigue requires more than just training—it demands ongoing monitoring and actionable insights. EHS systems can incorporate tools for tracking signs of fatigue and mental strain, providing alerts before these issues lead to serious incidents. Ensure your system is equipped to handle this vital aspect of safety.

---

## More Questions to Ask:

- ✓ Are your fatigue management tools actively identifying high-risk periods?
- ✓ How do you assess the effectiveness of your mental health training programs?
- ✓ What proactive measures are in place to prevent fatigue-related incidents?

# 4 Does Your EHS Give Real-Time Visibility into High-Risk Activities?



Real-time visibility is critical in preventing incidents before they escalate. Whether it's off-site construction work or driving, high-risk activities demand immediate attention, but many EHS systems provide data only after an incident has occurred.

Your EHS system should allow you to monitor high-risk activities as they happen, providing alerts when safety thresholds are crossed. By enabling real-time data feeds from connected workers and equipment, you can intervene before an incident escalates.

---

## More Questions to Ask:

- ✓ Are you able to monitor high-risk activities as they happen, rather than after the fact?
- ✓ Does your system provide alerts for exceeding safety thresholds?
- ✓ How quickly can you deploy resources to mitigate risks once identified?

## 5

# Is your EHS Prepared for Future Compliance Requirements?

Safety regulations are constantly evolving, and staying compliant requires a system that adapts to new standards. In the past five years, OSHA penalties for serious violations have increased by over 15%, with the average fine rising from \$5,472 in 2020 to \$6,271 in 2023. Businesses that fail to keep up are facing heavier fines. Is your EHS software agile enough to incorporate new compliance standards without costly delays or manual interventions?

Your EHS system should not only help you meet current compliance requirements but also adapt quickly to future regulations. Automated compliance updates and customizable features can ensure that your system evolves alongside industry standards, keeping your business ahead of the curve.



---

## More Questions to Ask:

- ✓ How quickly can your system update to reflect new compliance standards?
- ✓ Are you regularly auditing your EHS system for regulatory gaps?
- ✓ How does your system handle cross-border compliance if you're operating in multiple regions?



# How We Can Help

---



## **EHS Suite**

From tracking incidents and near-misses to enforcing safety protocols, our EHS software helps you maintain compliance and continuously improve your safety performance. By proactively managing hazards, and monitoring high-risk activities, you can prevent accidents and protect your workforce effectively.

## **Mobile Worker Suite**

With real-time tracking, journey management, and automated emergency response features, we help you protect your workers who are on the move or working in isolation. This solution reduces risks related to traffic exposure, lack of support, and emergency response delays, ensuring that your workers are never alone in critical moments.

## **Fatigue Suite**

On top of standard Fatigue Management such as monitoring work hours and ensuring compliance with rest breaks, our fatigue management solution uses a 60 second test to identify when your workers are struggling with alertness, a leading indicator of fatigue. This proactive approach helps reduce fatigue-related errors, incidents, and accidents, ensuring your workers are fit for duty.

---

At SafetyIQ, we are dedicated to helping you create a safer work environment with our innovative safety solutions. For more information or to schedule a demo, contact us today.

USA: 1 800 208 6253  
AUS: 1800 491 746

E: [Media@SafetyIQ.com](mailto:Media@SafetyIQ.com)  
W: [SafetyIQ.com](https://www.SafetyIQ.com)

301 N Main Street,  
Greenville, South Carolina  
29601